



Clairvoyant 1223H(W)

Two Mega Pixels (Wi-Fi) IP CAMERA



H.264 Dual Streaming, Duplex audio, Optional Wi-Fi or POE

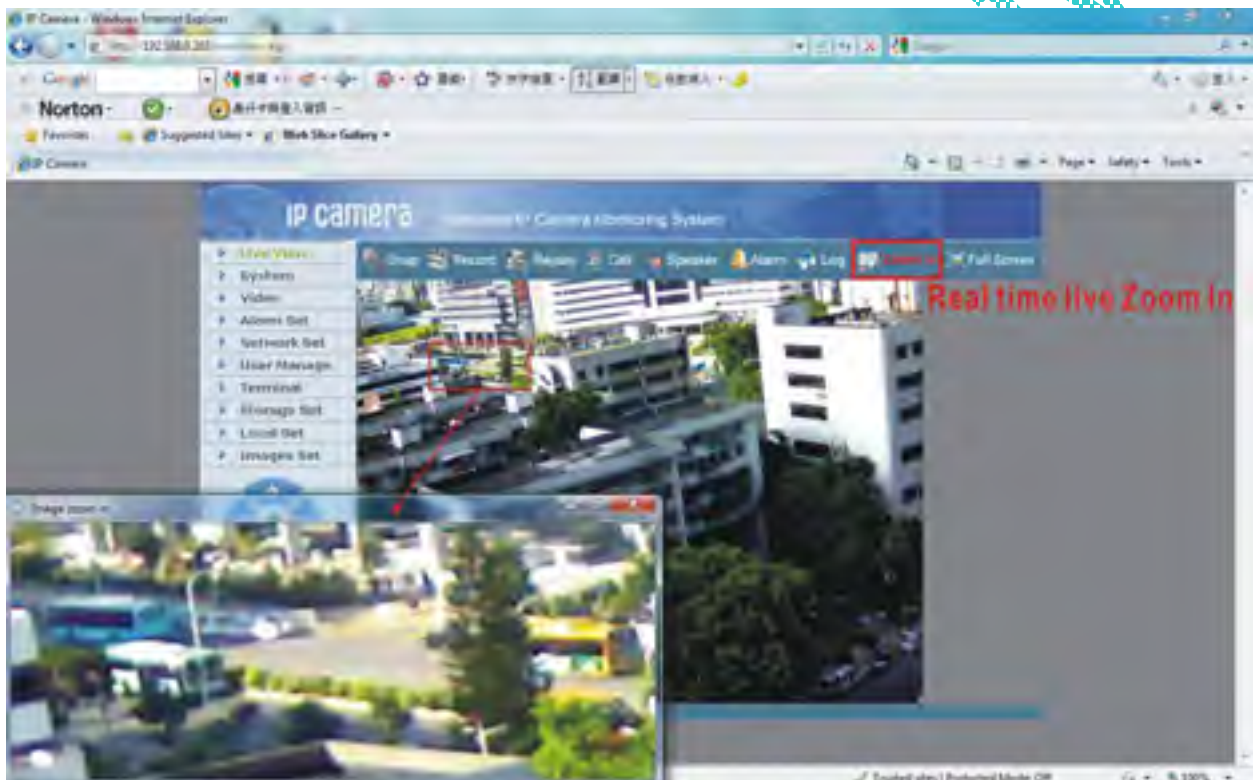
Clairvoyant 1223H(W) IP Camera offers a cost-effective, outdoor IP camera solution with optional Wi-Fi for remote monitoring and security surveillance over a local area network or the Internet. The camera is ideal for use in small or mid-sized businesses and homes, it is also easy to set up and use.

Clairvoyant 1223H(W) is an embedded IP camera device designed for 2.4GHz IEEE802.11g wireless network video surveillance applications. Optimized H.264 video compression algorithm assures clearer and more fluent image either wired or 2.4GHz wireless network video surveillance applications e transmission. It adopts **two Mega-Pixels Sensor**, the latest techniques and high integration single chip SOC with powerful Linux RTOS (Real-time Operating System) to realize high performance and low cost digital multimedia process. Built-in Web Server allows users to conveniently carry out remote control via Internet Explorer. Furthermore, central management software can be used for integrated surveillance and management of multiple network cameras, so it is very easy to build large video surveillance system.



Performance:

- SOC single chip solution, equipped with two processors, ARM9 and DSP
- 2 Mega-Pixels Sensor
- H.264 **main profile @ Level 3**, realize transmission of High Definition video over low network bandwidth easily.
- Support dual compression and dual video output streams, more adaptive to different network environment, display different resolution video on different client devices (PC & phone)
- Up to 30 frames per second in all resolutions ranging up to **1600 x 1200**
- Up to 10 viewers can directly access the camera simultaneously
- **Zoom selected area on IE browser**



- Stand alone alarming & motion detection; able to set 4 detective zones each with 5 levels sensitivity, send snapshots by scheduling or at alarm/ motion detected through emails or upload pictures to FTP server.
- Built-in Web server enables the use of a standard Web browser for viewing and management
- Support remote software upgrade safely function
- Support dynamic IP address (DDNS), LAN, Internet (ADSL PPPoE & DHCP)
- Network protocols: HTTP, TCP/IP, UDP, RTP, RTCP, RTSP, SMTP, PPPoE, DDNS, DNS, SMTP, BOOTP, DHCP, FTP, NTP
- Support Bi-directional real time transmission of audio talk-back & broadcast.
- Network self-adapting technology to adjust video frame rate automatically according to the network bandwidth.



- Auto-recovery function if exception occurs and auto-connection if the network fails
- Provide SDK and client demo source code.
- Management software that can manage up to 1728 cameras in 48 groups, display maximum 36 cameras video on single screen, support video lost, motion detection and sensors alarm functions
- Support masks function to mask sensitive area to protect privacy.
- Support **active & passive mode** access, support GSM/ CDMA network or private network without public IP.
- Support Multicast, unlimited clients connection. (must with Clairvoyant decoder or NVSCenter software)
- Supports **SD card up to 32GB**, can store recording and snapshots locally.
- IEEE 802.11g/b 2.4GHz Wi-Fi with WEP, WPA, WAP2 protection (optional).
- IP64 Weather proof
- 48 high efficiency IR LEDs with auto **IR cut lens**

Technical parameters:

Imagine Sensor: 2 Mega-Pixels Sensor

Lens: 12mm fixed focal, optional 6 / 8mm lens available; auto IR cut

LEDs: 48 x Ø8mm IR LEDs, range 20 meters

Video compression: H.264 main profile @Level 3; M-JPEG dual compression

Video Resolution: 1600 x 1200, 1280 x 960, 1280 x 720, 800 x 600

Adjustment of Video Parameters: Brightness, hue, contrast, saturation and image quality

Streaming Format: Optional streaming format (video streaming or audio & video streaming)

Video Frame Rate: PAL: 1 - 25 frames/second

NTSC: 1 - 30 frames/second

Video Compression Bit Rate: 16Kbit/S~16Mbit/S, constant bit rate or variable bit rate

Audio Input: 1 channel linear input, Impedance:1kΩ

Audio Compression: MP3

Audio Output: 1 channel linear output

Video Output: 1 channel 1Vp-p, 75ohm, BNC

Audio talk-back input: 1 channel, MIC interface

Supported Protocols: HTTP, TCP/IP, UDP, RTP, RTCP, RTSP, SMTP, PPPoE, DDNS, DNS, SMTP, BOOTP, DHCP, FTP, NTP

System Interface: 10 Base-T/100Base-TX Ethernet port; 1 RS485 port, 1 RS232 port;

Wi-Fi: 2.4GHz, IEEE 802.11g/b with WEP, WPA, WAP2 (C1223HW)

Antenna (C1223HW)

- 5dBi @2.4GHz, omni
- IPEX1.13

Alarm Input: 1 channel on/off input, supporting NO (normally open) or NC (normally close) sense



Alarm Output: 1 channel on/off output, 220VAC 1A/ 24VDC 1A

Input Power Supply: DC 12V 1A, optional 802.3af POE

Maximum Power: Less than 8W

Operating Temperature: -10 ~ +55 °C

Storage Temperature: -20 ~ +70 °C

Operating Humidity: 10 ~ 85%

System Requirements: Operation System: Microsoft Windows XP, Vista, 7
Browser: Microsoft Internet Explorer 6.x or above

Please download below picture for comparison of 2Mega-Pixel & D1 cameras

ftp://ftp.clairvoyant.com.tw/C1223H_Video/Two-Mega-Pixels_comparisons-a.jpg

1600 x 1200 2Mega-Pixel Video

ftp://ftp.clairvoyant.com.tw/C1223H_Video/1600x1200.MP6

1280 x 960 1.3Mega-Pixel Video

ftp://ftp.clairvoyant.com.tw/C1223H_Video/1280x960.MP6

1280 x 720 720p Video

ftp://ftp.clairvoyant.com.tw/C1223H_Video/1280x720.MP6

800 x 600 Video

ftp://ftp.clairvoyant.com.tw/C1223H_Video/800x600.MP6

MP6 player

<ftp://ftp.clairvoyant.com.tw/h264/tool/MP6.rar>

