



## Clairvoyant 1263H-Outdoor

### 4" PTZ H.264 IP CAMERA



#### H.264, Dual Streaming, Duplex Audio, PAN / TILT / ZOOM

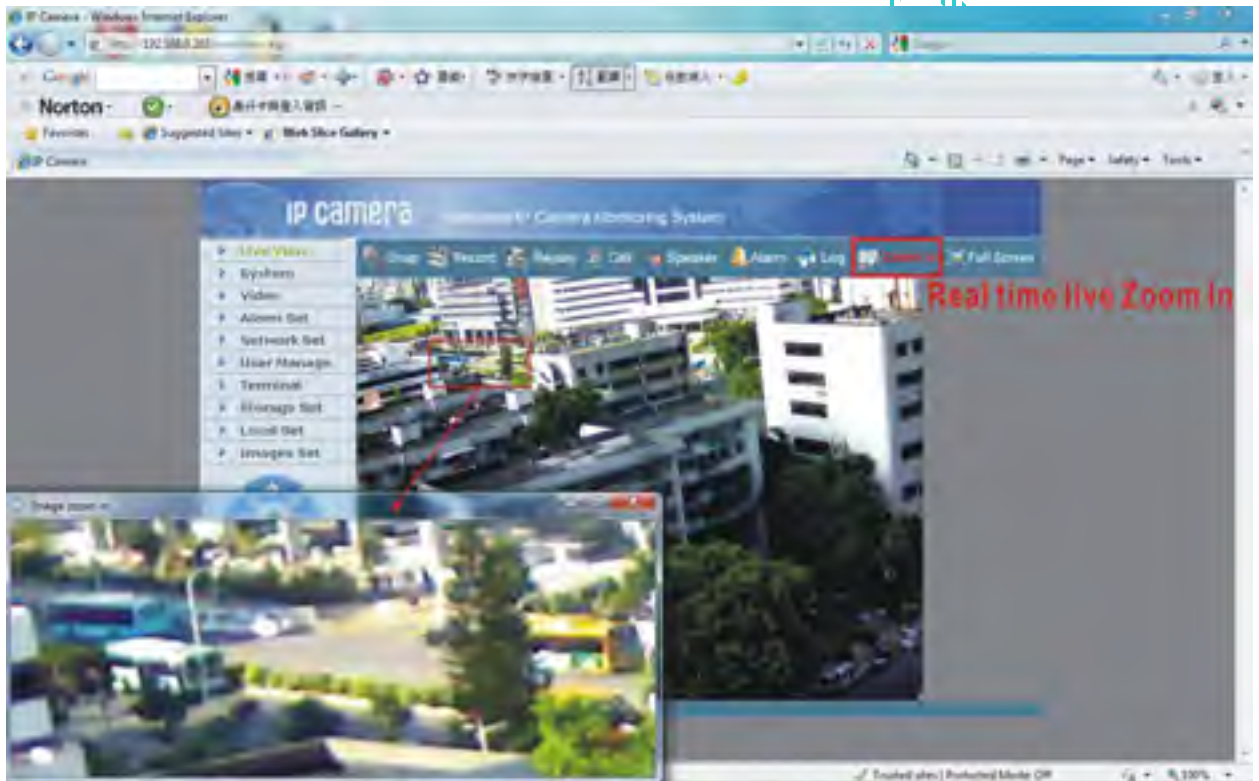
Clairvoyant 1263H-O IP Camera offers a cost-effective, outdoor pan/ tilt /zoom camera solution for remote monitoring and security surveillance over a local area network or the Internet. The camera is ideal for use in small or mid-sized businesses and homes, it is also easy to set up and use.

Clairvoyant 1263H-O is an embedded IP camera device designed for network video surveillance applications. Optimized H.264 video compression algorithm assures clearer and more fluent image transmission. It uses **420 TVL 1/3" Sony CCD (optional 480TVL/ 540TVL) & 4X Sync-Focus motorized zoom lens**, the latest techniques and high integration single chip SOC with powerful Linux RTOS (Real-time Operating System) to realize high performance and low cost digital multimedia process. Built-in Web Server allows users to conveniently carry out remote control via Internet Explorer. Furthermore, central management software can be used for integrated surveillance and management of multiple network cameras, so it is very easy to build large video surveillance system.



**Performance:**

- 355° continuous PAN, 90° tilt mechanism with presets
- Weather proof IP66 outdoor housing
- SOC single chip solution, equipped with two processors, ARM9 and DSP
- Support high sensitivity CCD sensor (1/3" Sony CCD 420/ 480/ 540TVL)
- H.264 main profile @ Level 3, realize transmission of High Definition video over low network bandwidth easily.
- Support dual compression and dual video output streams, more adaptive to different network environment, display different resolution video on different client devices (PC & phone)
- Up to 30 frames per second in all resolutions ranging up to D1 :704 x 576 (PAL)
- Up to 10 viewers can directly access the camera simultaneously
- 4X optical Zoom, digital zoom with selected area on IE browser



- Stand alone alarming & motion detection; able to set 4 detective zones each with 5 levels sensitivity, send snapshots by scheduling or at alarm/ motion detected through emails or upload video clips & pictures to FTP server.
- Built-in Web server enables the use of a standard Web browser for viewing and management
- Support remote software upgrade safely function
- Support dynamic IP address (DDNS), LAN, Internet (ADSL PPPoE & DHCP)
- Network protocols: HTTP, TCP/IP, UDP, RTP, RTCP, RTSP, SMTP, PPPoE, DDNS, DNS, SMTP, BOOTP, DHCP, FTP, NTP, Multicast
- Support Bi-directional realtime transmission of audio talk-back & broadcast.



- Network self-adapting technology to adjust video frame rate automatically according to the network bandwidth.
- Auto-recovery function if exception occurs and auto-connection if the network fails
- Provide SDK and client demo source code.
- Management software that can manage up to 1728 cameras in 48 groups, display maximum 36 cameras video on single screen, support video lost, motion detection and sensors alarm functions
- Support masks function to mask sensitive area to protect privacy.
- Support **active & passive mode** access, support GSM/ CDMA network or private network without public IP.
- Support Multicast, unlimited clients connection. (match with Clairvoyant decoder or NVSCenter software)
- Supports **TF card up to 32GB**, can store recording and snapshots locally.
- Optional IEEE 802.11g/b 2.4GHz Wi-Fi with WEP, **WPA, WAP2** protection.

#### Technical parameters:

**Imagine Sensor:** 420TVL, 1/3 Sony CCD, Day/ Night, optional 480/ 540TVL

**Lens:** 3.7 ~ 14.8mm 4X Sync-Focus motorized zoom Lens; F: 1.6

**Angle of View (horizontal) :** 90° ~ 26° (zoom:1X ~ 4X)

**PAN & TILT :** 355° continuous PAN, 90° TILT

**PAN & TILT Speed:** Adjustable speed; max. 45° /sec

**Presets & cruise:** 8 presets, swing

**Video compression:** **H.264 main profile @Level 3**; M-JPEG **dual compression**

**Video Resolution:** PAL: 352x288 (CIF) ,704x288 (2CIF) ,704x576 (D1)

NTSC: 352x240 (CIF) ,704x240 (2CIF) ,704x480 (D1)

**Adjustment of Video Parameters:** Brightness, hue, contrast, saturation and image quality

**Streaming Format:** Optional streaming format (video streaming or audio & video streaming)

**Video Frame Rate:** PAL: 1 - 25 frames/second

NTSC: 1 - 30 frames/second

**Video Compression Bit Rate:** 16Kbit/S~16Mbit/S, constant bit rate or variable bit rate

**Audio Input:** 1 channel linear input, Impedance:1kΩ

**Audio Compression:** G.726

**Audio Output:** 1 channel linear output

**Audio talk-back input:** 1 channel, MIC interface

**Supported Protocols:** HTTP, TCP/IP, UDP, RTP, RTCP, RTSP, SMTP, PPPoE, DDNS, DNS, SMTP, BOOTP, DHCP, FTP, NTP, UPnP

**System Interface:** 10 Base-T/100Base-TX Ethernet port; 1 RS485 port, 1 RS232 port;

**Wi-Fi:** 2.4GHz, IEEE 802.11g/b with WEP, **WPA, WAP2 (C1263HW-O)**

**Antenna (C1263HW-O)**





- 5dBi @2.4GHz, omni
- IPEX1.13

**Alarm Input:** 1 channel on/off input, supporting NO (normally open) or NC (normally close) sensor

**Alarm Output:** 1 channel on/off output, 220VAC 1A/ 24VDC 1A

**Input Power Supply:** DC 12V 1.5A

**Maximum Power:** Less than 10W

**Dimension (H, Ø mm):** 125, 124

**Weight (Kg):** 1

**Operating Temperature:** -10 ~ +50 °C

**Storage Temperature:** -20 ~ +70 °C

**Operating Humidity:** 0 ~ 95%

**System Requirements:**

Operation System:

Microsoft Windows XP/ Vista/ 7

Browser:

Microsoft Internet Explorer 6.x or above

